



The Notre Dame Lacrosse

EXPERIENCE GUIDE





NCAA FINALIST

2010, 2014

NCAA FINAL FOUR

2001, 2010, 2012, 2014, 2015

NCAA QUARTER-FINALIST

1995, 2000, 2001, 2008, 2010, 2011, 2012, 2013, 2014, 2015, 2016, 2017

NCAA TOURNAMENT APPEARANCES

1990, 1992, 1993, 1994, 1995, 1996, 1997, 1999, 2000, 2006,
2007, 2008, 2009, 2010, 2011, 2012, 2013, 2014, 2015, 2016, 2017



ACC/UNITED WAY GAME CHANGER AWARD WINNER
2015



“Welcome to Notre Dame!”

You will hear those words frequently as you visit our campus and they accurately reflect the spirit and attitude of the Notre Dame community.

As you visit our facilities and meet the people here, you will quickly recognize the collective commitment to excellence. Coaches, teachers and the students who live, work and play here share a common goal – to provide the best collegiate experience possible. The values of Character, Culture, and Community that have forever been associated with a Notre Dame education will be apparent in every building you visit and in every person you meet.

Our staff will especially look forward to spending time with you. Finding the right people is as important to us as finding the best players. The key people around our program, from the Coaching Staff, Academic Services and Strength and Conditioning, Sports Nutrition & Student-Athlete Welfare, and Career Development, up to and including our players, will meet with you during your visit to help you appreciate the culture and values that define our program.

We hope your time with us will provide the important insight into what we do, and how we do it, that you may need to help you make your decision.

Thank you for visiting, we're glad you are here.

Go Irish!

Kevin Corrigan
Head Coach, Notre Dame Lacrosse

Contents

- 5 The Coaching Staff
- 5 Team N.D.
- 6 Web & Social Media
- 7 Top Videos
- 8 Resources for Student-Athletes
- 10 Information for your Unofficial Visit
- 11 Directions to Campus
- 12 Hotels
- 13 On-Campus Dining
- 13 Area Dining
- 14 Campus Tour



The Coaching Staff

Kevin Corrigan

Head Coach

Office: (574) 631-5108

Cell: (574) 532-0277

✉ kcorriga@nd.edu

[Read Bio](#)

John Crawley

Volunteer Assistant

Cell: (516) 320-1202

✉ jcrawley@nd.edu

[Read Bio](#)

Gerry Byrne '91

Assistant Coach

Office: (574) 631-8554

Cell: 617 320-0302

✉ gbyrne@nd.edu

🐦 [@byrneirish](https://twitter.com/byrneirish)

🐦 [@ndlacrosse](https://twitter.com/ndlacrosse)

[Read Bio](#)

Matt Karweck '06

Assistant Coach

Office: (574) 631-9046

Cell: (574) 514-0547

✉ mkarweck@nd.edu

🐦 [@coachkarweckND](https://twitter.com/coachkarweckND)

[Read Bio](#)

Rob Simpson, '85

Director of Lacrosse Operations

Office: (574) 631-8816

Cell: (631) 413-1868

✉ jrodak@nd.edu

[Read Bio](#)

Jennifer Watchorn

Lacrosse Office Assistant

Office: (574) 631-3383

✉ jwatchor@nd.edu

Lacrosse Office Address

Notre Dame Lacrosse

Joyce Center • Gate 3

University of Notre Dame

Notre Dame, IN 46556

Fax: (574) 631-9690



Team N.D.

ACADEMIC SUPPORT

Josh Skube

Student-Athlete Academic Advisor

Office: (574) 631-4613

✉ jskube@nd.edu

Pat Holmes, '79

Director, Academic Services for

Student-Athletes

Office: (574) 631-9789

✉ pholmes1@nd.edu

SPORT PSYCHOLOGY

Niki Sims, Psy. D.

Sport Psychologist

Office: (574) 631-7336

Joey Ramaeker, Ph.D.

Sport Psychologist

Office: (574) 631-7336

SPORTS PERFORMANCE

Geoff Puls

Strength & Conditioning

Assistant Director

Office: (574) 631-7784

✉ gpuls@nd.edu

[Read Bio](#)

Marta Schechura

Sports Nutritionist

Cell: (630) 362-0850

✉ mscechur@nd.edu

Mandy Merritt

Athletic Trainer & Physical Therapist

Office: (574) 631-7100

Cell: (574) 340-1311

✉ mmerritt1@nd.edu

[Read Bio](#)

CAREER DEVELOPMENT & ALUMNI RELATIONS

Brant Ust '01

Assistant Athletics Director

Student-Athlete Alumni Relations/

Monogram Club

Office: (574) 631-6107

✉ ust.2@nd.edu

Claire VeNard '07

Student-Athlete Welfare & Career

Development

(574) 631-5548

✉ claire.venard@nd.edu



The Notre Dame Lacrosse Experience

NDLXP.com	<p>NDLXP is the Notre Dame Lacrosse Experience. It encompasses competition, service, career development/alumni engagement, and traveling the globe to immerse our team in these experiences.</p> <p>Visit NDLXP.com</p>
NDLaxTV	<p>NDLaxTV is our video home on YouTube. Over 300 three to five minute videos that give you all access to the culture, personality & resources of our program. 20+ playlists covering Highlights, Behind The Scenes, Career Networking, Gear Zone, Community Service, Facilities/Resources, Travel, Drills & More. The spirit and values of our program are embodied on this channel and evoke our culture in ways that words cannot express.</p> <p>Watch NDLaxTV on YouTube</p>
Playing for Peace Site	<p>Playing 4 Peace is the community service arm of Notre Dame Lacrosse. It uses the platform of sport to transcend boundaries and bring people together both in South Bend and around the world in the pursuit of peace, justice, conflict resolution and human understanding. Efforts have included our yearlong Player Mentoring program at Dickinson Fine Arts Academy in South Bend, Partnership with O.W.L.S. (Outreach With Lacrosse & Schools) in Chicago, and Fields of Growth in Uganda/Jamaica. Learn More</p>
Camps and Clinics Site	<p>Learn more about our local and regional skills camps and clinics</p>
Notre Dame Lacrosse Homepage	<p>Here you can read the latest headlines and review the roster and schedule as our team prepares for another run to the Final Four.</p> <p>Visit Our Website</p>
Schedule Subscription	<p>Subscribe to our live-updating schedule on most calendars.</p>

Top Videos

Available on [our YouTube Channel](#)



NDLXP: 4 Years of the Notre Dame Lacrosse Experience

Henry "Hank" Williams '15 created this stirring video as an ode to his classmates and the variety of trips, travel, service, competitions & good times they had in their 4 years together.

[Play Video](#)



ND Lax Experience: 11 Days in Italy

An international tour that is one of the most memorable trips in the history of N.D. Lacrosse.

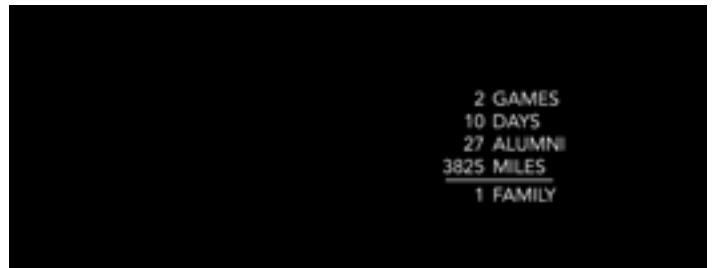
[Play Video](#)



ACC/United Way "Game Changers" Award

Chosen from over 300 teams in ACC for our 7 year old program mentoring students at Dickenson Academy.

[Play Video](#)



Spring Break 2015

South Bend to Chicago, to Denver, to Baltimore, to Charlottesville to D.C. Learn about our Spring Break Tour.

[Play Video](#)



Four Days in Colorado

Documentary on our 2013 fall break tour of Denver and Colorado Springs.

[Play Video](#)



The Notre Dame Experience

Meet Key Members of Team ND and get a sense of the community of support our student-athletes receive as members of our program

[Play Video](#)

Resources for Student-Athletes

nd.edu

The Academic website for the University of Notre Dame. You can dig deeper into the values and mission of the University as well as the various Colleges and Schools that comprise the palette of options here at Notre Dame, including the Mendoza College of Business, ranked No.1 nationally by Business Week magazine.

[Learn More](#)

**Academic Services for
Student-Athletes
Coleman-Morse Center**

This office exists to enhance the quality of the student-athlete experience and to promote individual ownership of academic, athletic, personal and social responsibilities. To meet the varying needs of student-athletes, the office provides a wide range of services including general academic support, tutoring, monitoring of academic, performance, team orientation, time management assistance, information about post-graduate and scholarship opportunities.

[Learn More](#)

[Watch Videos About Academic Support](#)

**Student-Athlete Welfare and
Career Development**

This office provides opportunities for student-athletes to develop the skills necessary to successfully transition into the University, their sport and the community. Through educational programming and a host of other additional resources, SWD will empower all participants to make positive decisions in order to reach their full potential as students, athletes and citizens. Resources include career planning, community service opportunities, leadership development, Monogram Club Mentoring program and more.

[Learn More](#)

Academic Services for Student-Athletes is located on South Quad in the Coleman-Morse Center.



Resources for Student-Athletes

<p>Notre Dame Career Center</p>	<p>This office provides undergraduate students, graduate students and alumni with career counseling and career development services, self-assessments, workshops, presentations for academic departments, career fairs, mock interviews and a variety of other career development services.</p> <p>Learn More</p> <p>Watch Videos About N.D. Lacrosse Career Development Trips</p>
<p>Academic Departments, Colleges and Schools</p>	<p>Notre Dame's undergraduate academic departments are divided into four Colleges and two Schools.</p> <ul style="list-style-type: none"> • Departments, Colleges and Schools <p>Undergraduate</p> <ul style="list-style-type: none"> • School of Architecture • College of Arts and Letters • Mendoza College of Business - No. 1 undergrad business school • College of Engineering • Keough School of Global Affairs - Opens August 2017 • College of Science • First Year of Studies <p>Graduate</p> <ul style="list-style-type: none"> • The Graduate School • The Law School
<p>Alumni Club Network</p>	<p>Learn more about the legendary Notre Dame Alumni Network that will take you beyond career development and networking and introduce you to the nearly 300 clubs around the world (more than any other University) and their motto: "stay connected, stay irish."</p> <p>Learn More</p>
<p>Athletic Facilities</p>	<p>Take a tour of our facilities that rival any NFL or Olympic Training Center.</p> <ul style="list-style-type: none"> • Arlotta Stadium - our home stadium • Gulielmino Athletics Complex - film study • Haggar Fitness - weight training • Loftus Indoor Stadium - indoor practices and games <p> Video Tour of N.D. Lacrosse facilities</p>
<p>Monogram Club</p>	<p>An organization of Monogram winners and a valuable resource for post-graduate networking with N.D. student-athlete alums around the world.</p> <p>Learn More</p>

Information for your Unofficial Visit

The ideal unofficial visit lasts two days. Some elements of your visit will include meetings with the coaching staff, strength & conditioning coach, and our academic advisor. Depending upon the timing of your visit, you may also have the opportunity to see a lacrosse practice, attend an athletic event, spend some time with the team, and attend a class.

Important Information

- Chicago and its two major airports are on central time, while Notre Dame is on eastern time. You will lose an hour when traveling east from Chicago to Notre Dame.
- Notre Dame Stadium Bag Policy: There is a new bag policy that limits the size of bags and purses on game days. The largest size bag allowed is the size of a woman's clutch purse, or a fanny pack. Notre Dame Stadium Bag Policy.
- Prior to your visit, we will need your travel itinerary and the names of everyone in your travel party.
- We will send you an individual unofficial visit itinerary a few days before your visit.
- Per NCAA rules, we are not permitted to provide you anything while you are on campus for an unofficial visit other than three complimentary tickets to an athletic event issued through a pass list.
- Please bring any updated video (game/highlight), a revised or updated transcripts, your current class schedule, as well as a projected junior/senior class schedule (if available).

Airport and Travel Information

- Airport selection is a function of cost, time and personal schedule. The Chicago-area airports (Midway & O'hare) are roughly 1.5 - 2 hours from the Notre Dame campus. Midway is a Southwest Airlines hub.
- The South Bend airport is located 10 minutes from campus and is serviced by Delta and United
- The following pages include directions to campus and some information on local hotels.
- The hotel links can provide insight regarding rates and availability on football weekends.

Unofficial Visits on Football Weekends

- **Game Tickets:** We will be able to reserve up to three tickets for any athletic event on campus (one for you and your parents or guardians.) The ticket office will not issue hard tickets, but will have your name on a pass list. In order to receive tickets, each person on the pass list will be asked to show ID.
- **Parking:** This can be a challenge on football game days. There are several pay lots in which you can pay to park, but your best option is to park along the south side of campus on local streets. Following the directions below, continue down Angela to Twyckenham, then make a right or left to hit local streets.
- **Gameday.nd.edu:** Provides information about Football Game Weekends

Navigating Campus

Notre Dame is a pedestrian friendly campus and most campus locations are no more than a 10-15 minute walk away.

- [Visitor Information](#)
- [Campus Map](#)
- [Virtual Tour](#)

Directions to Campus

Notre Dame is located just off exit 77 of the Indiana Toll Road in north central Indiana near the town of South Bend.

GPS Address

Notre Dame, IN, 46556

Lacrosse Office

104 Joyce Center, Gate 3, Notre Dame, IN 46556. Gate 3 is on the northwest corner of the Joyce Center.

South Bend Airport (SBN) | [Google Maps](#)

5 miles. 15 minutes.

- **Turn Left** on Lincolnway West
- **Turn Left** on N. Michigan St.
- **Turn Right** on E. Angela Blvd.
- **Turn Left** on Leahy Drive. Leahy Drive is east of the main Notre Dame Avenue entrance to campus.
- **Park** in the main lot south of the football stadium.

Chicago Midway Airport (MDW) | [Google Maps](#)

100 miles. 1 hour 45 minutes without traffic. This route requires tolls.

- **North** on S. Cicero Ave
- **North** on I-55 N. Stevenson Expressway toward Chicago
- **Merge onto I-90/I-94 East** toward E. Ryan Expressway and Indiana
- **Take Exit 59A** for I-90 Skyway East toward Indiana Toll Road
- **Continue on I-90** into Indiana, about 95 miles.
- **Take Exit 77**
- **Go Straight at the Light** onto Douglas Rd. Continue through both traffic circles.
- **Turn Right** on Wilson Dr.
- **Turn Left** on Bulla Rd.
- **Turn Right** on Leahy Dr.
- **Turn Right** into main parking lot south of the football stadium.

Chicago O'Hare Airport (ORD) | [Google Maps](#)

120 miles. 2 hours without traffic. This route requires tolls.

- **Leave the Airport** on I-190 E
- **Merge** onto I-90 E
- **Continue on I-90** into Indiana, about 100 miles.
- **Take Exit 77**
- **Go Straight at the Light** onto Douglas Rd. Continue through both traffic circles.
- **Turn Right** on Wilson Dr.
- **Turn Left** on Bulla Rd.
- **Turn Right** on Leahy Dr.
- **Turn Right** into main parking lot south of the football stadium.

Hotels

There are several hotel options close to the Notre Dame campus. Most should have availability on non-football weekends. On football weekends, hotel rooms are difficult to find and require a two-night minimum.

Area Hotel Information.

The Morris Inn

Located on campus
1399 N Notre Dame Ave, Notre Dame, IN 46556
(574) 631-2000 | [Website](#) | [Map](#)

The Inn at St. Mary's

Near Toll Road Exit 77. 30 min. walk to Joyce Center.
53993 IN-933, South Bend, IN 46637
(574) 232-4000 | [Website](#) | [Map](#)

Fairfield Inn & Suites

Just off campus in Eddy Street Commons
1220 E Angela Blvd, South Bend, IN 46617
(574) 234-5510 | [Website](#) | [Map](#)

Holiday Inn Express

Northeast of campus. 7 min. drive to Joyce Center.
53993 IN-933, South Bend, IN 46637
(574) 968-8080 | [Website](#) | [Map](#)

Ivy Court

Across the street from campus
1404 Ivy Court, South Bend, IN, 46637
(574) 277-9682 | [Website](#) | [Map](#)

Candlewood Suites

Close to SBN Airport . 15 min. drive to campus
3916 Lincoln Way W, South Bend, IN 46628
(574) 968-1072 | [Website](#) | [Map](#)

Doubletree

Downtown South Bend. 10 min. drive to campus.
123 N St Joseph St, South Bend, IN 46601
(574) 234-2000 | [Website](#) | [Map](#)

Staybridge Suites

10 min. drive to campus
52860 S.R. 933, South Bend, IN 46637
(574) 968-7440 | [Website](#) | [Map](#)

On-Campus Dining

South Dining Hall

(\$\$) Open to the public. Credit cards accepted.
South Dining Hall, Notre Dame, IN, 46556
(574) 631-6147 | [Website](#) | [Map](#)

North Dining Hall

(\$\$) Open to the public. Credit cards accepted.
North Dining Hall, Notre Dame, IN, 46556
(574) 631-6176 | [Website](#) | [Map](#)

Legends of Notre Dame

(\$) On campus, south of the football stadium.
54801 Juniper Road, Notre Dame, IN 46556
(574) 631-2582 | [Website](#) | [Map](#)

LaFortune Student Center

(\$) Starbucks, Subway, Taco Bell, Pizza Hut, Smashburger
LaFortune Student Center, Notre Dame, ID, 46556
(574) 631-8128 | [Website](#) | [Map](#)

Sorin's

(\$\$\$) Fine dining on-campus in the Morris Inn.
1399 Notre Dame Ave, Notre Dame, IN 46556
(574) 631-2000 | [Website](#) | [Map](#)

Rohr's Pub

(\$\$) Casual pub fare in the Morris Inn.
1399 Notre Dame Ave, Notre Dame, IN 46556
(574) 631-2000 | [Website](#) | [Map](#)

Reckers

(\$) Counter-service sandwiches and wood-fired pizza.
South Dining Hall, Notre Dame, IN, 46556
(574) 631-8638 | [Website](#) | [Map](#)

Einstein Bros. Bagels

(\$) Sandwiches, soups, salads, and a variety of bagels.
1 Eck Center, Notre Dame, IN, 46556
(574) 631-6316 | [Website](#) | [Map](#)

Au Bon Pain - Hesburgh Library

(\$) Soups, salads, sandwiches and specialty coffee.
221 Hesburgh Library, Notre Dame, IN 46556
(574) 631-9939 | [Website](#) | [Map](#)

Au Bon Pain - Hesburgh Center

(\$) Across the street from Notre Dame Bookstore.
130 Hesburgh Center, Notre Dame, IN 46556
(574) 631-8578 | [Website](#) | [Map](#)

Area Dining

Bonefish Grill

(\$\$) Seafood and steaks. 5 min. drive from campus.
620 W Edison Rd, Mishawaka, IN 46545
(574) 659-2663 | [Website](#) | [Map](#)

Lasalle Grill

(\$\$\$) Fine dining in downtown South Bend.
115 W Colfax Ave, South Bend, IN 46601
(574) 288-1155 | [Website](#) | [Map](#)

Café Navarre

(\$\$\$) Fine dining in downtown South Bend.
101 N Michigan St, South Bend, IN 46601
(574) 968-8101 | [Website](#) | [Map](#)

Eddy Street Commons

(\$-\$\$\$) Multiple dining options just south of campus.
N. Eddy St., South Bend, IN 46617
[Website](#) | [Map](#)

Campus Tour

[Virtual Tour](#) | [Campus Map](#) (mobile-friendly)



Arlotta Stadium

The home stadium of Notre Dame Lacrosse.

[Map](#)



Basilica of the Sacred Heart

A magnificent church right on campus. Daily masses are celebrated here.

[Map](#)



Coleman-Morse Center

Offices of the First Year of Studies and Academic Services for Student-Athletes.

[Map](#)



Compton Family Ice Arena

A 5,000-seat, two-rink ice facility and the home of Notre Dame Hockey.

[Map](#) | [Hockey Tickets](#)



The Grotto

A replica of the famed Lourdes grotto and the spiritual heart of the University

[Map](#)



Hammes Notre Dame Bookstore

The best place to stock up on Notre Dame gear.

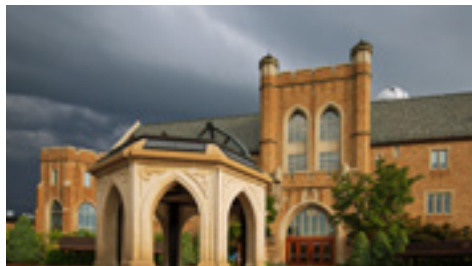
[Map](#)



Hesburgh Library

Featuring a facade mural known widely as "Touchdown Jesus."

[Map](#)



Jordan Hall of Science

The largest Academic Building on Campus, focused on serving undergraduate research.

[Map](#)



Joyce Center

The home of Notre Dame basketball and our Lacrosse offices above Gate 3.

[Map](#)

Campus Tour

[Virtual Tour](#) | [Campus Map](#) (mobile-friendly)



Guglielmino Athletics Complex and Loftus Center

Indoor practice facility and weight training facility.

[Map](#)



The Main Building

Home of the Office of Undergraduate Admissions.

[Map](#)



Mendoza College of Business

The no. 1 undergraduate business school in America.

[Map](#)



The Lakes

St. Mary's and St. Joseph's lakes, from whence the University gets its name.

[Map](#)



Log Chapel

A replica of the first structure built on campus in 1842 by Notre Dame founder Fr. Sorin.

[Map](#)



O'Shaughnessy Hall

Home to the College of Arts and Letters, Notre Dame's largest college..

[Map](#)



Bond Hall

Current home of the School of Architecture and original campus library building.

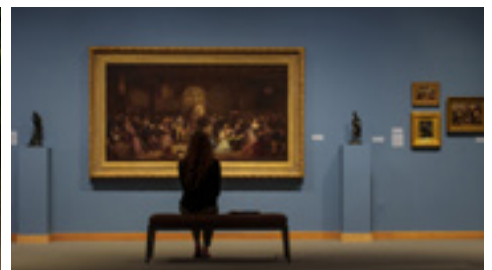
[Map](#)



Morris Inn

Notre Dame's on-campus hotel. Open to the public and featuring two great restaurants.

[Map](#)



Snite Museum of Art

An on-campus museum housing the University's extensive collection of art.

[Map](#)



The University of Notre Dame men's lacrosse team pursues excellence on and off the field through the three pillars in which the program is built: Character, Culture & Community. These three foundational values guide the promise of the program, which is to provide its student-athletes with the most compelling and enriching experience in all of college athletics. Through academics, competition, service and travel, the program aims to immerse its players in situations that enhance their student-athlete experience to help them become the people, students and teammates they aspire to be.

